



A Strong Whirlpool Pump



HA350 Pump

A Strong Whirlpool Pump

- High performance
- Dry run protection
- Silent running
- Both pneumatic and electronic use



HA350, 0.55kW

ARTICLE NO.	POWER (P1)	V/HZ/A	SELF DRAIN	PNEUMATIC	CENTER SUCTION (W/ DRAIN CONNECTION)
22-35321*	0.55kW/0.7HP	220-240V/50Hz/2.7A	X	X	

HA350, 0.68kW

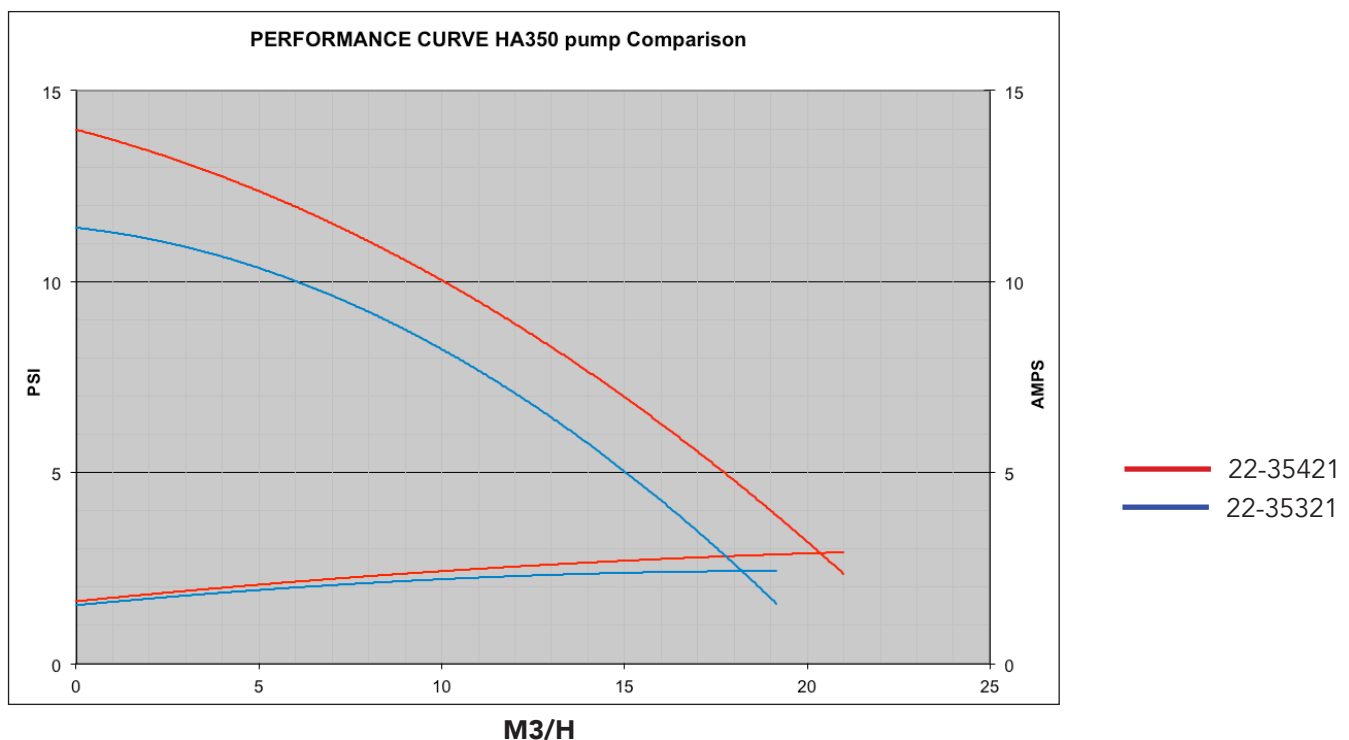
ARTICLE NO.	POWER (P1)	V/HZ/A	SELF DRAIN	PNEUMATIC	CENTER SUCTION (W/ DRAIN CONNECTION)
22-35421*	0.68kW/0.9HP	220-240V/50Hz/3.1A	X	X	
22-35221	0.68kW/0.9HP	220-240V/50Hz/3.1A		X	X

HA350, 0.68kW DRY RUN

ARTICLE NO.	POWER (P1)	V/HZ/A	PNEUMATIC ONLY	SELF DRAIN	DRY RUN PROTECTION
22-35421DRP	0.68kW/0.9HP	220-240V/50Hz/3.1A	X	X	X

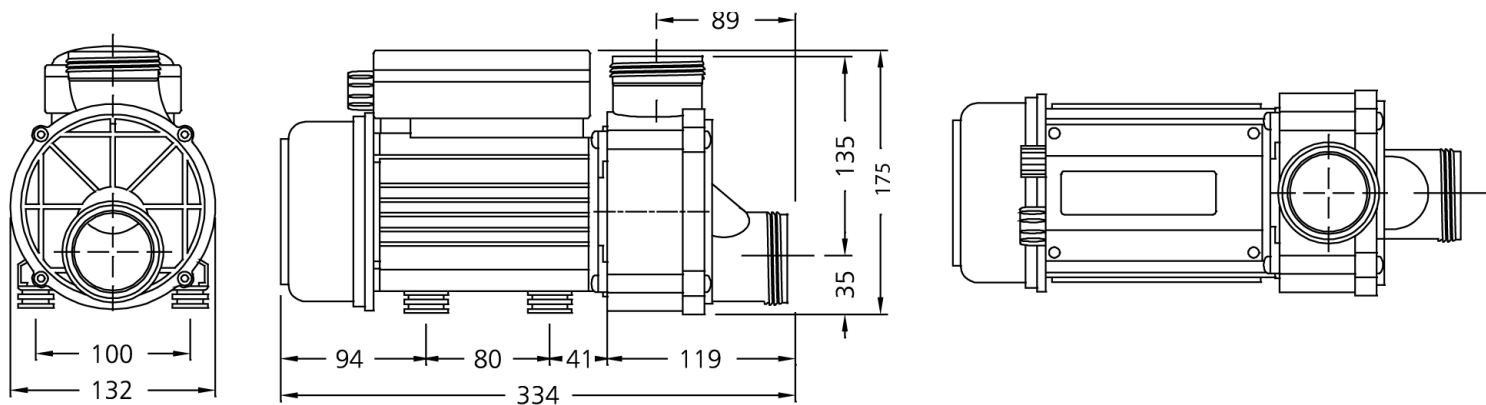
* Available in bulk upon request 37-xxxxx. Replace Article No. 22 with 37 before ordering.

PerformanceCurve

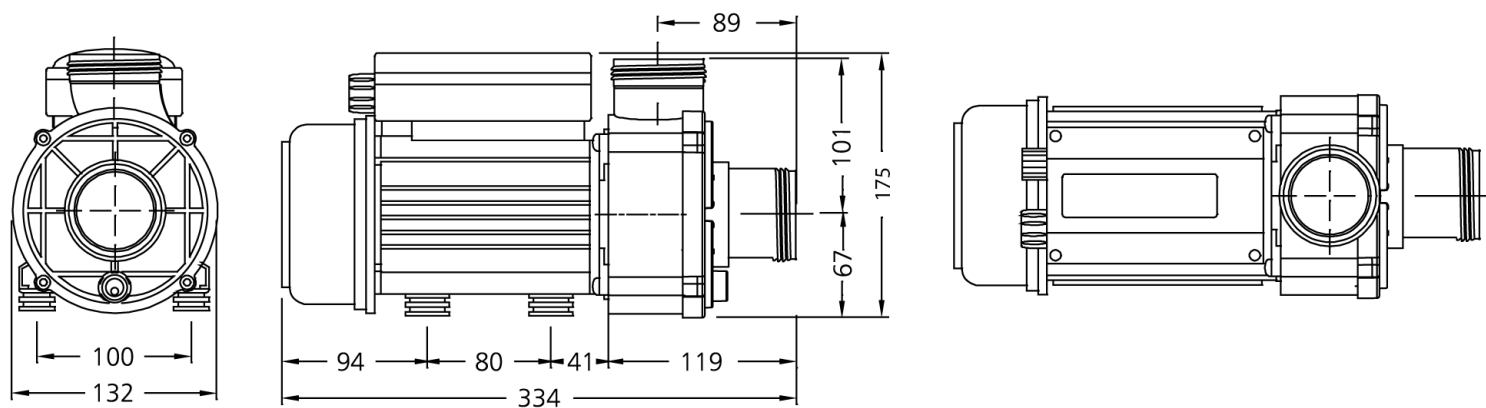


PumpDimensions

Self-drain



Centre suction



Dimensions in mm

Buttress Thread (2.50")

O-Ring mounted on union

STANDARD GLUE CONNECTION

PUMP UNION, STRAIGHT

92015M	50 mm I.D.
92015N	1 1/2" I.D.



PUMP UNION WITH DISCHARGE TEE

92020M	2 X 32 mm I.D.
92020	2 x 1" I.D.
92030	2 x 26 mm O.D.



Other Accessories

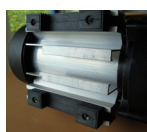
STANDARD GLUE CONNECTION

Discharge Tee

20-0425	2 X 32 mm I.D. X 50
---------	---------------------



InstallationHA350



Installing the Pump

The easy accessible rubber feet allow quick installation of the pump, by screwing 4 pcs. of M6 bolts up into the nuts, that are integrated in the rubber feet or use the one point mounting slot.